

CUSTOMS & LOGISTICS SERVICES

FROM PORT TO PORTCH, WE'VE GOT YOU!

IMPORTS IN 7 EASY STEPS



GET A CONSULT

Call in or fill out our online form to receive a pricing list and discuss your shipment!

1

WHAT WE'LL NEED FROM YOU

One of our agents will reach out and provide 2 documents to fill out & request the following:

- Commercial Invoice
- Bill of Lading
- Packing List

2



ISF IMPORTER FILING

We handle your Importer Security Filing (ISF) and import bond to ensure compliance with customs regulations.

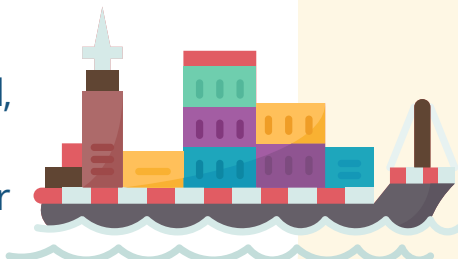
3



ARRIVAL NOTICE

Within a week of your shipment's arrival, your local shipping agent will send an Arrival Notice to you. Forward it to us for prompt processing.

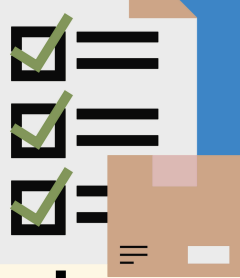
4



CUSTOMS ENTRY FILING

We take care of the customs entry filing and entry bond to clear your shipment before its arrival.

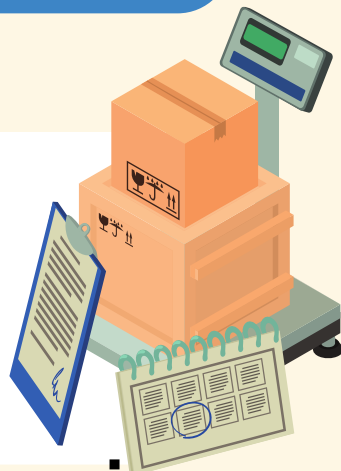
5



CUSTOMS FEES INVOICE

You'll receive an invoice from us for customs and service fees. Pay to proceed with the shipment release.

6



CARGO RELEASE & DELIVERY

Once cleared, we can arrange delivery with your trucker or provide port-to-porch delivery with our truckers

7



FREQUENTLY ASKED QUESTIONS

What is ISF (Importer Security Filing)?

ISF is a document that must be filed with U.S. Customs to avoid fines up to \$5000; this is typically filed at least 24- 48 hours prior to the goods departing. EMD files the ISF for you, but we need you to complete a provided form with all the necessary information for the shipment.

What is the difference between LCL and FCL?

LCL (Less than Container Load): Your shipment shares a container with others' shipments.
FCL (Full Container Load): Your goods occupy an entire container.

What if my shipment has special customs requirements, i.e. EPA filings for vehicles?

EMD handles special customs filings like EPA 3520-1 and HS7, and any other necessary documentation for specific goods, i.e. vehicles, trailers & regulated imports.

Does EMD help with shipping?

EMD can help arrange LCL and FCL shipping for imports from China in addition to logistics and customs clearance. Whether you handle the shipping with your manufacturer or prefer us to assist, we ensure a smooth process from port to door. Let us know your shipping arrangements, and we'll take it from there.

What is a POA (Power of Attorney), and what is it for?

A POA is required a document by U.S. Customs & Border Protection (CBP) for EMD to act on your behalf for customs clearance. This allows us to file necessary customs documents and ensure smooth import.